

CMS Installation & Equipment Registration

- Install "CMSSetup.exe" file of the provided CD in your PC.
- Double-click icon to run program.
- Click icon to enter "Local Setting".
- Choose "Remote Site" item.



- ▶ CMS Local Setting
- ▶ CMS (Central Monitoring Station)
- Enter Site Name, IP Address / Domain Name, Command Port and Stream Port.
- Enter the ID and Password of the DVR (Default : Admin / 1111).
- Click "Add Site" and "OK" to save the setting and exit.
- Double-click the added site in site tree at top-left corner and then users may monitor the site remotely.
- Make sure to set a resolution of PC to 1024 x 768 or higher before run the CMS. Otherwise, it may not work properly.

Function

- ※ CMS Remote Setup
- Users can change DVR's Menu Setup through CMS
- Click button in Watch mode and users are able to control Setup menu of DVR remotely.
- ※ Search & Playback in CMS
- Click on the top panel of CMS program and then Live display mode will turn to Search mode.

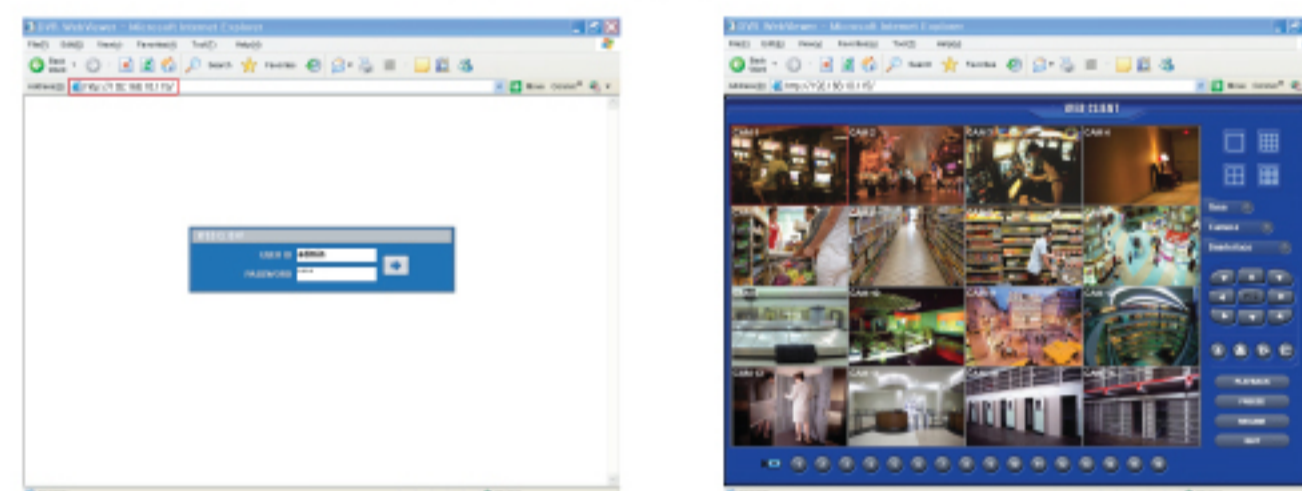
- The recorded date will be highlighted in the calendar and the recorded time will be shown as horizontal bar in time line.
- Select date and time and then click "▶" to start playback.
- Make sure to stop (■) the playback before users change the date, time and playback control.



• CMS Remote Setup      • CMS Remote Search

Web Client

- By using Web browser, users are able to access monitoring remotely without installing CMS program.
- Type the IP address or DDNS domain name of the DVR in a web browser.
- In the first connection, users have to install ActiveX to open Web Client.
- After install the ActiveX, enter ID and Password of the DVR and click .
- Users are able to watch playback display and do PTZ control in the web browser.

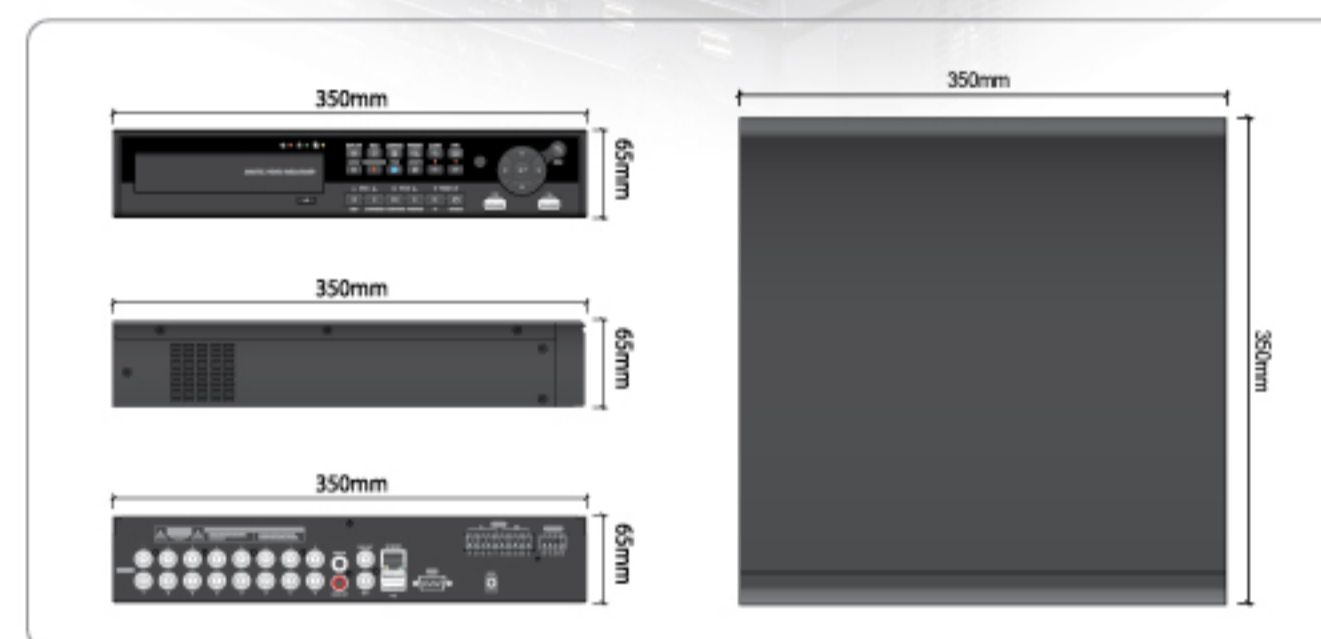


▶ Web Client Login      ▶ Web Client

Advanced H.264  
H.264 REALTIME

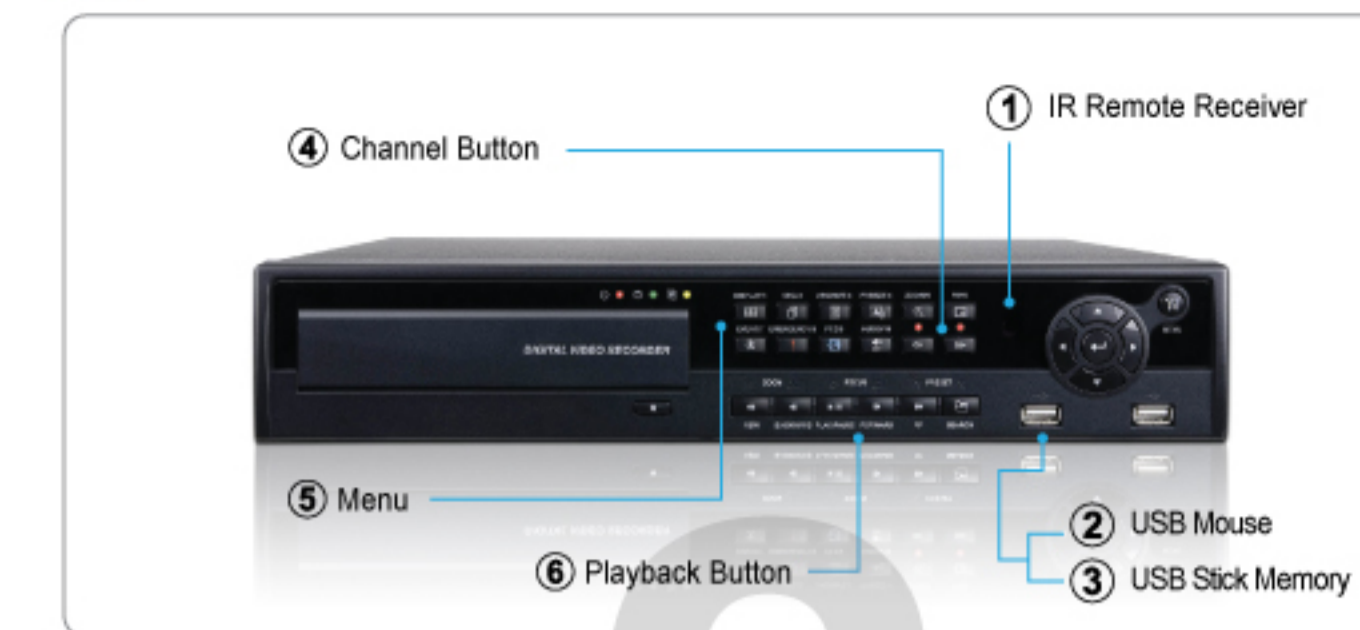


Dimension

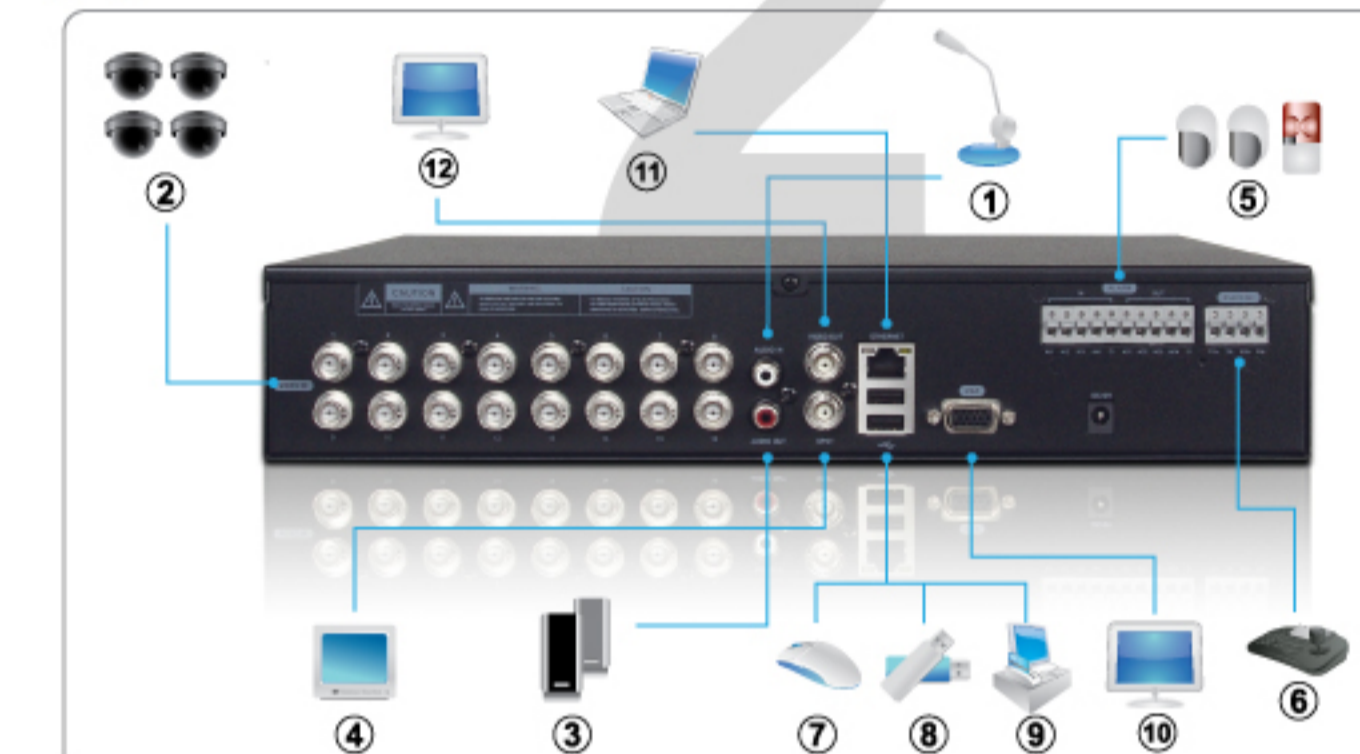


This document contains preliminary information and is subject to change without notice.

Front



Rear



- ① Audio Input
- ② Video Input
- ③ Audio Output
- ④ Spot Output
- ⑤ Alarm In / Output
- ⑥ Keyboard Controller / PTZ
- ⑦ USB Mouse
- ⑧ USB Memory
- ⑨ Serial In
- ⑩ VGA Monitor
- ⑪ Ethernet
- ⑫ Video Output

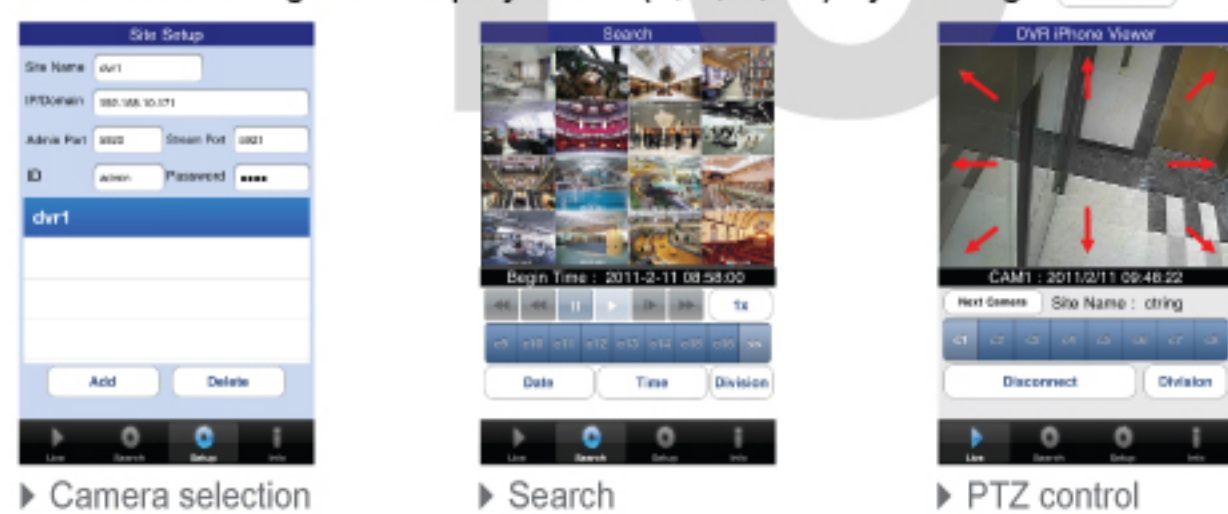
\*The rear picture above is based on H Series 16 Channel DVR.

3G Mobile Viewer (ex. iPhone)

- ※ Installation
- Users can remotely monitor their home or office DVRs by 3G mobile devices, such as iPhone, Blackberry, Android, Symbian and MS Windows Mobile.
- Please search and install "mviewer" program which is offered free of charge by "dvrdomain" at App Store.

Registration

- Click "mviewer" icon on iPhone menu.
- Move to "Add" and enter site information, such as site name, IP, Port, ID and Password.
- Click "Add" to save the setting.
- On "Watch" window, click one of the registered site and click "▶".
- To connect the site, click "Connect".
- To select other channels, click the channel bar below the Site Name.
- If users wish to change the channel to 9~16, then click "Next Camera".
- Users can change the display mode (1, 4, 9, 16) by clicking "Division".



- ▶ Camera selection
- ▶ Search
- ▶ PTZ control
- ※ Search
- Users are able to search the recorded data in the mobile CMS. (Date & Time Search)
- ※ PTZ Control
- Touch and drag upside from the center of the screen to zoom out and downside to zoom in.
- Touch sides and corners of the screen to change the direction as users want.

\*For the detailed instruction of other devices, please refer to the full manual enclosed in the provided CD.

Estimator & E-MAP

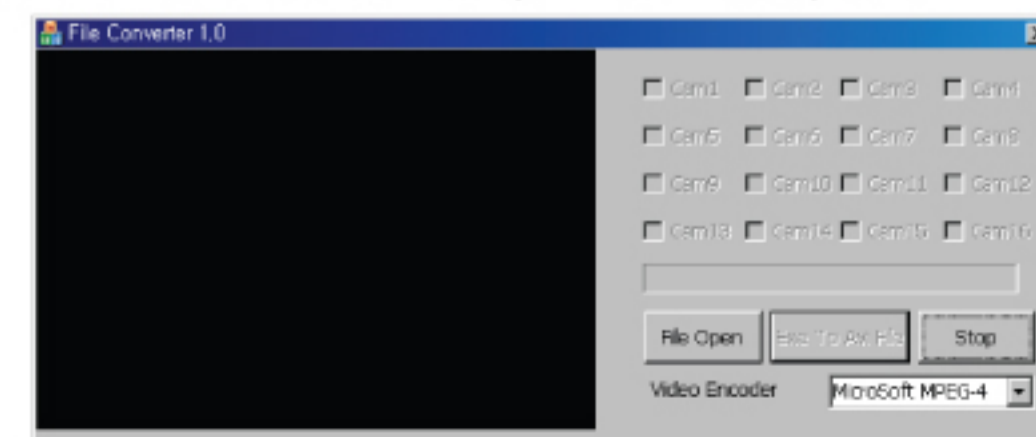
- After setting FPS per channel, video size and video quality, click Estimate button. Then the maximum recording days and data size will show up.
- Users may visualize the location of cameras and alarms on E-MAP and it interacts with CMS.



▶ Estimator      ▶ E-MAP

EXE to AVI Converter

- ① Users are able to convert Archived file (EXE format) to AVI format.
- ② Click "File Open" and choose an Archived file (EXE format).
- ③ Click "EXE to AVI File" and select a directory to save the converted AVI file.
- ④ Select a channel to convert (Only one channel can be converted at once).
- ⑤ Select a Video Encoder between Microsoft and XVID encoder.
- ⑥ Click "Save" then converting will automatically start.



▶ EXE to AVI Converter

This document contains preliminary information and is subject to change without notice.

Warning

- Installation and servicing should be performed only by qualified and experienced personnel.
- Power off the DVR when connecting cameras, audios or sensor cables.
- The manufacturer is not responsible for any damage caused by or resulting from the user physically opening the DVR for examination or attempting to fix the unit.
- The manufacturer will not be liable for any issues with the unit if the warranty seal or the product label is removed or damaged.
- This product has Free voltages (100V and 240V). See installation instructions before connecting to the power supply.
- To avoid any risk of explosion, do not replace the battery on the main board by anything other than a Lithium battery.
- This equipment and all communication wirings are intended for indoor use only.
- To reduce the risk of fire or electric shock, do not expose the unit to rain or moisture.
- Do not use this equipment near water or in contact with water.
- Do not add any attachments and/or equipment without manufacturer's approval as such additions may result in the risk of fire, electric shock or other personal injury.
- Do not put anything into the products through openings of this equipment such as USB slot and cable ports, as they may touch dangerous voltage points or short out parts that could result in a fire or electric shock.
- Do not spill liquid of any kind on the equipment.

Warranty

- Regarding the warranty details, please contact to the distributor or the sales representatives.
- This User's Quick Guide provides only a quick guidance of basic installation for user's convenience. Please refer to a full manual in the S/W CD enclosed with the product for more detailed instruction.

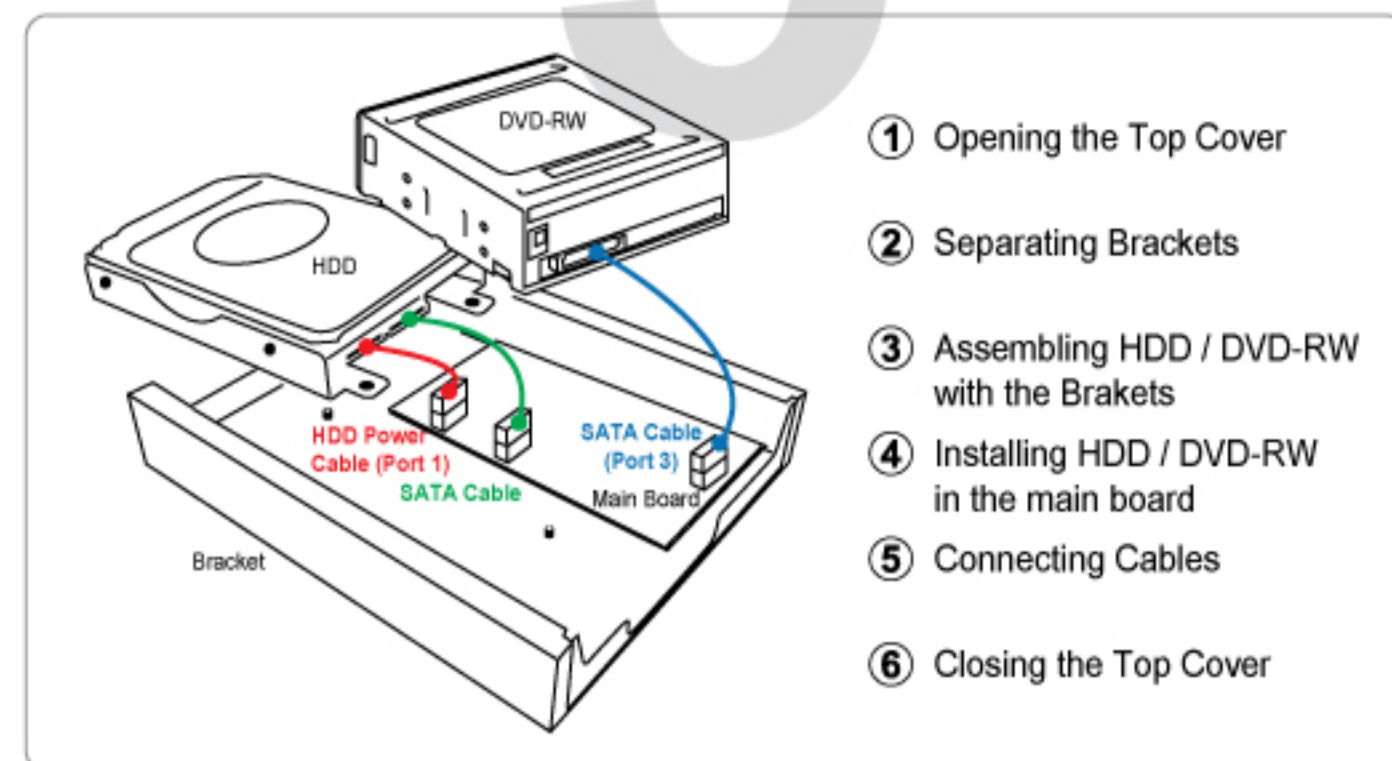
The List of Configuration

DVR SET	
CD (Software / Manual)	
Quick Guide	
Screws	
HDD Bracket	
SATA Cable	
Remote Controller	
Power Cable	

## Connection

- Connect cameras into 'VIDEO IN'.
- Please connect a CCTV monitor to 'VIDEO OUT', a computer monitor to 'VGA' and a HD monitor to 'HDMI' respectively. If necessary, users may connect another CCTV monitor to 'MULTI SPOT'.
- Connect an audio device to 'AUDIO IN' and a speaker system to 'AUDIO OUT'.
- Please use a speaker system with volume adjustable.
- Connect to 'ETHERNET' connector with a LAN cable.
- Connect Alarm Inputs (Sensors) to 'AI 1-AI 4' connector and connect Sensor Common to 'G' connector.
- Connect a Alarm Output (Buzzer, Siren, etc.) to 'AO 1-AO 4' connectors and connect Common to 'G' connector.
- Connect a Pan / Tilt receiver (or Pan / Tilt camera) to 'RS-485 / 422' connector.
- Please observe proper (+) and (-) polarity.

## HDD / DVD-RW Installation



- Opening the Top Cover
- Separating Brackets
- Assembling HDD / DVD-RW with the Brackets
- Installing HDD / DVD-RW in the main board
- Connecting Cables
- Closing the Top Cover

Securely fix a hard disk by using bracket and screws provided herewith as above picture.

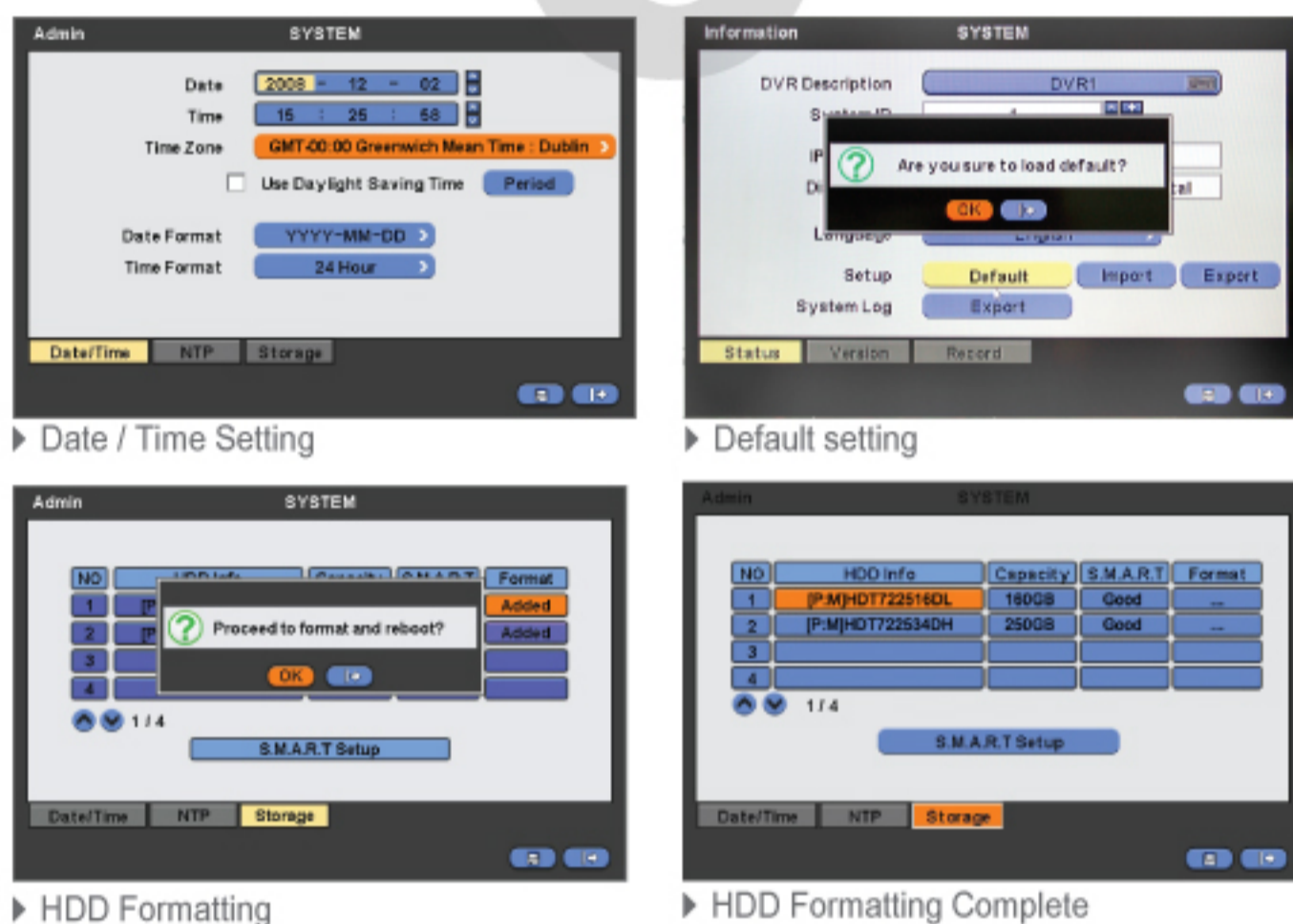
\*For installation/addition/removal/Removal of HDD (DVD-RW), make sure that DVR is turned off. Otherwise, it may cause permanent damage to the HDD (DVD-RW).

## System Setup

- Please follow the below procedure for 'HDD initialization'.
- [Date/Time setup] Set up the current date and time (SETUP>SYSTEM>Admin>Date/Time).
- [Initialization of system setup] All values in setup are restored to factory default settings. (SETUP>SYSTEM>Information>Status>Setup>Default)
- [HDD format]
  - Go to SETUP>SYSTEM>Admin>Storage>Format.
  - Click "Added" in Format column and choose 'OK' on the dialogue box to start formatting.
  - If there are more than two HDDs, each must be formatted in sequence.
  - When the format is completed, DVR will auto-reboot.
  - If the frame changes to '...' after reboot, it means formatting has been completed successfully.

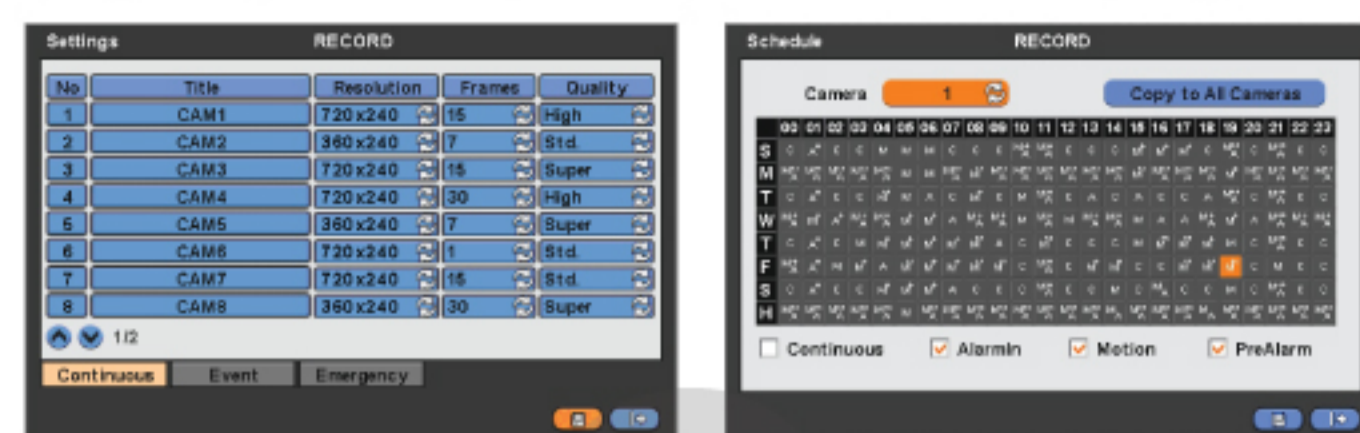
### NOTE

- If there is any message such as "Added", "Removed", "Relocated" or "Add / Removed" in Format column, please click all the messages and format all the connected HDDs in order.
- After Installation / Addition / Relocation / Replacement of HDD, users should start 'HDD initialization' including formatting. Otherwise, DVR won't recognize the hard disk and may not function properly.



## Recording Setting

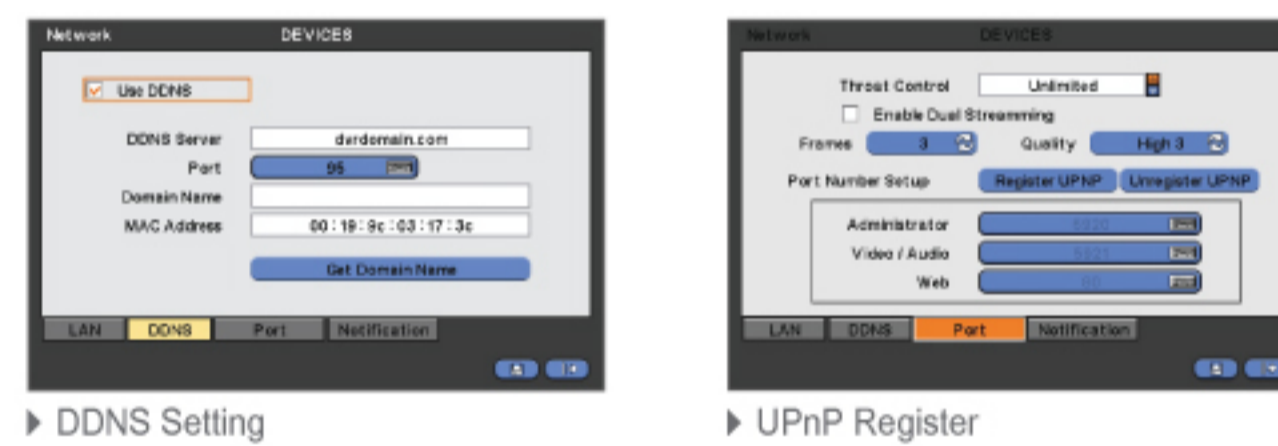
- Enter Setup> Record> Settings to choose recording resolution, frames and quality among three recording modes (Continuous, Event, Emergency).



- Then move to Setup> Record> Schedule to designate the record schedule by its time, date, camera and recording mode.

## Network Setting

- Enter Setup> Device> Network to verify the network connection among Static, DHCP and DDNS.
- Dynamic IP users may use DDNS for unchanging domain name.
- The Port Number setup menu has two selections of "Register UPnP" or "Unregister UPnP".
- Click (Enter) "Register UPnP" for automatic port forwarding.
- Click (Enter) "Unregister UPnP" to do port forwarding manually.



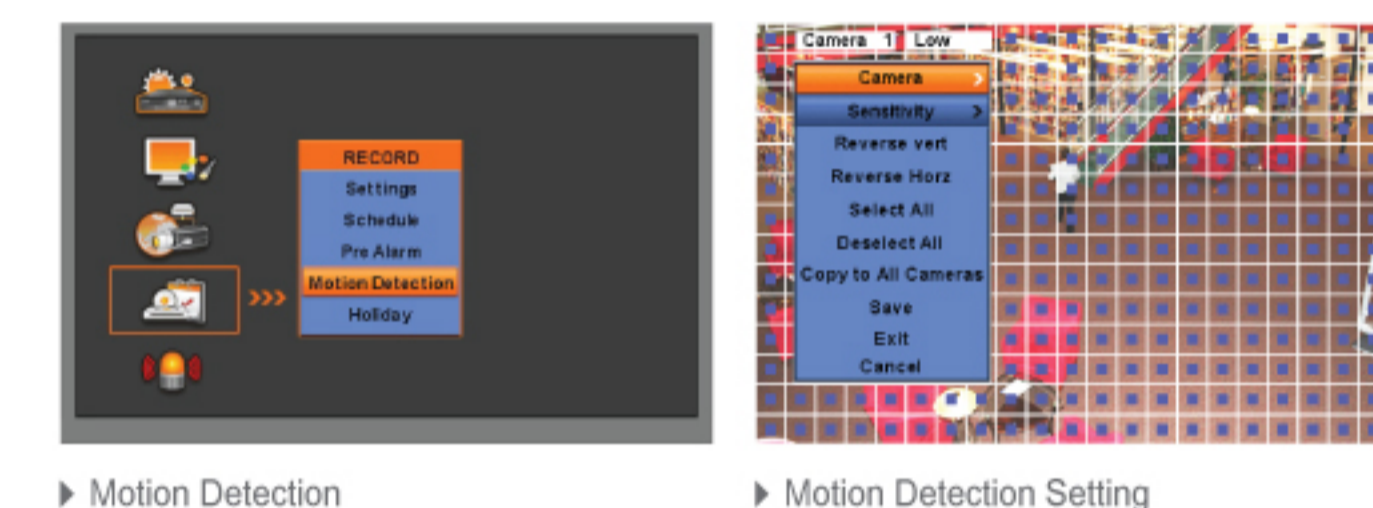
## Pre Alarm

- Pre Alarm is effectively used when users select recording mode by Alarm or Motion.
- The Pre Alarm function enables users to record a specific time before the motion or alarm is detected.
- Users are able to set the recording up to 3 hours before the event actually happens.



## Motion Detection

- The Motion Detection menu will allow users to set recording when camera detects any movement on the screen.
- Users may assign a certain partition for detecting movements on screen (22X15).

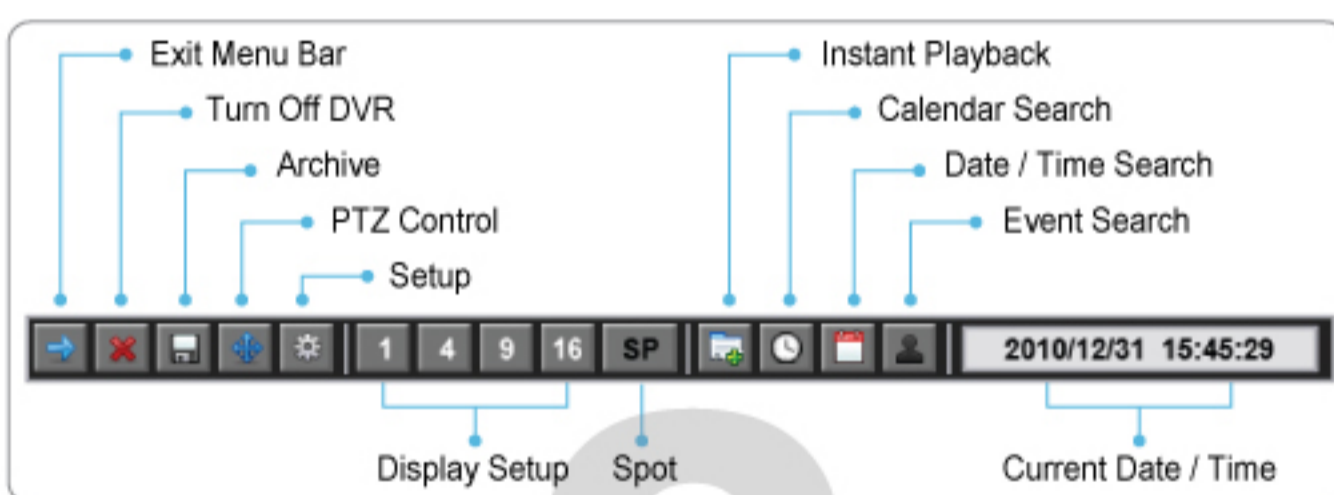


## Front Button and LED

Key	Operating Mode
Left/Right/Up/Down	• Pan/Tilt rotation of Up / Down / Left / Right in PTZ mode (Setup Mode : Up / Down / Left / Right on screen cursor control)
1 ~ 16ch	• Camera select keys : (4 / 8 / 16 channel DVR)
Display	• Select 1 / 4 / 9 / 16 channel display
Sequence	• Channel sequence mode on / off (Main Monitor)
Archive	• Copy video data into the external Clip Copy devices
Freeze	• Screen freeze mode on / off
Event	• System Log display on / off
Emergency	• Emergency recording on / off
PTZ	• Pan / Tilt control mode on / off
Audio / ESC	• Audio on / off (Viewing / Playback) • Select audio channel : Press AUDIO key and then channel key • ESC
Menu	• Enter the Main Menu (Setup mode)
REW	• Fast backward playback (changes up to x128 with each press) • Zoom-Out on PTZ mode
Backward	• Frame backward playback • Zoom-In on PTZ mode
Play / Pause	• Viewing mode : Instant playback (the last one minute) • Playback mode : 1X PLAY / PAUSE • Focus Near in PTZ mode
Forward	• Frame forward playback • Focus Far in PTZ mode
FF	• Fast forward playback (changes up to x128 with each press) • Save Preset in PTZ mode
Search	• Video search mode on / off • Go to Preset in PTZ mode
Power LED (Red)	• Light Off : DVR Off • Light On : DVR On
HDD LED (Green)	• Light Off : Stop recording • Blink : Recording / Playback modes (HDD Access), Archive in operation
Network LED (Yellow)	• Light Off : Failed to connect to Ethernet • Blink : Connected to Ethernet

## Menu Bar

- Menu Bar enables users to control all functions as front button on the OSD screen.
- Move the mouse cursor to bottom around Date and Time indication and then Menu Bar will show up on the live screen.



## Screen Icon

Icon	Description	Icon	Description
[Clock]	Continuous Recording Mode	[Speaker]	Audio Recording On
[Person]	Event Recording Mode (Alarm In / Motion)	[Network]	Network Connection Indication / No. of Access (up to 4)
[Red Circle]	Recording On	[List]	Channel Sequencing Mode
[TV]	PTZ Registration / PTZ Mode	[Lock]	Key Lock
[Remote]	Remote Controller	[Disk]	HDD Overwrite Mode
[Disk]	HDD No Overwrite Mode (HDD Full)	[Disk]	HDD No Overwrite Mode (recording)

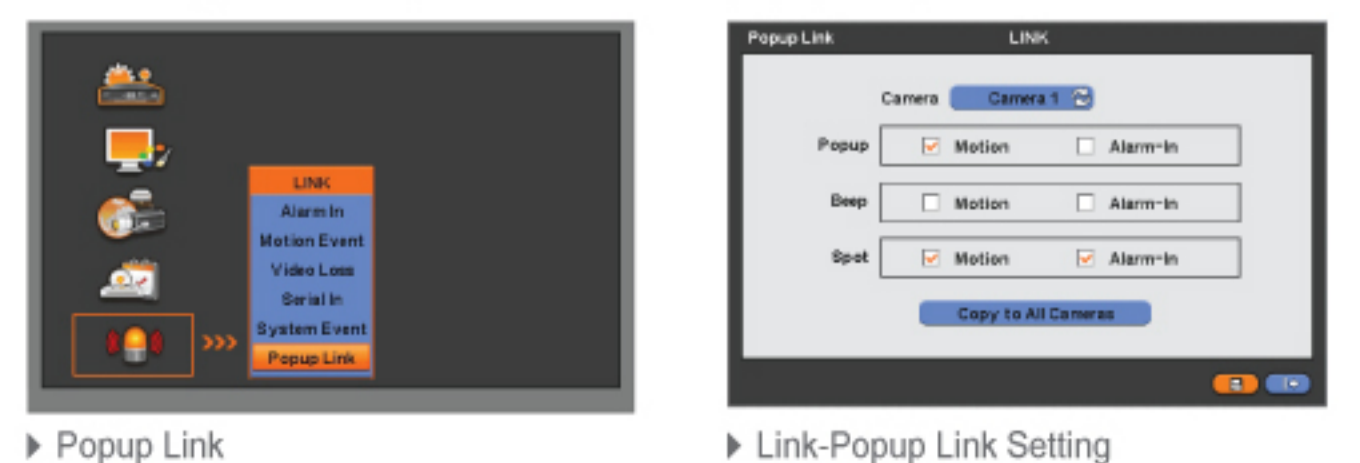
## Link

- The LINK menu will allow users to program the interaction of all kinds of alarm inputs (Sensor, Motion Event, Video Loss, System Event, etc.), alarm outputs, and e-mail notifications, etc.



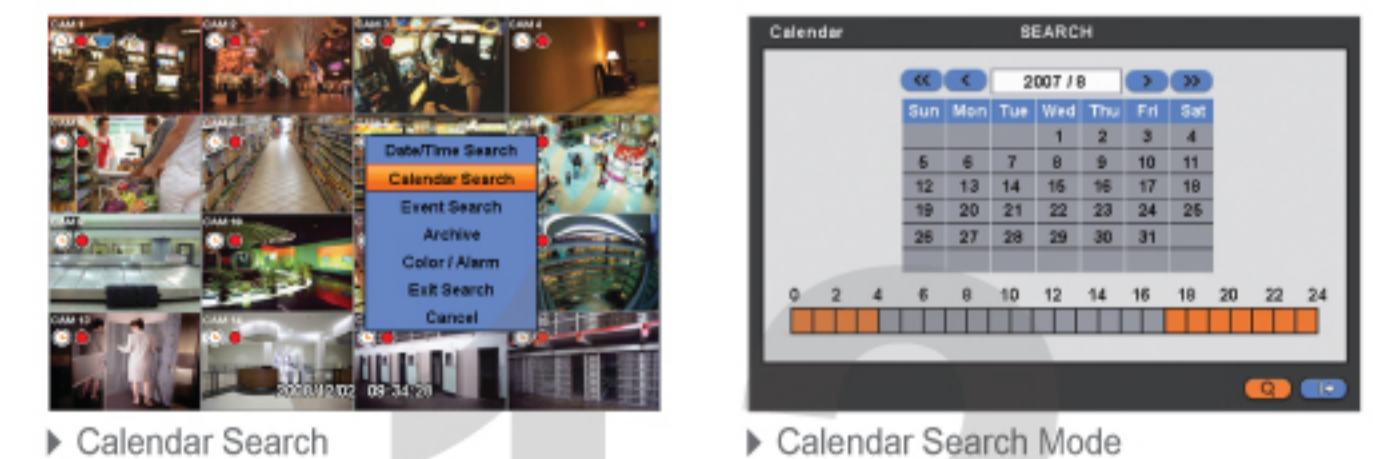
## Popup Link

- When Motion or Alarm In is detected, users can select a Popup or Beep sound for warning or have a particular channel popup on Spot Screen.



## Search & Playback

- Calendar Search
  - Right click on the live display screen and go to "Search> Calendar Search".
  - Users may select a camera and minutes by double-clicking the box on the time bar.
- In the playback mode, users may find playback controller by moving the mouse cursor at the bottom near the center of the screen.

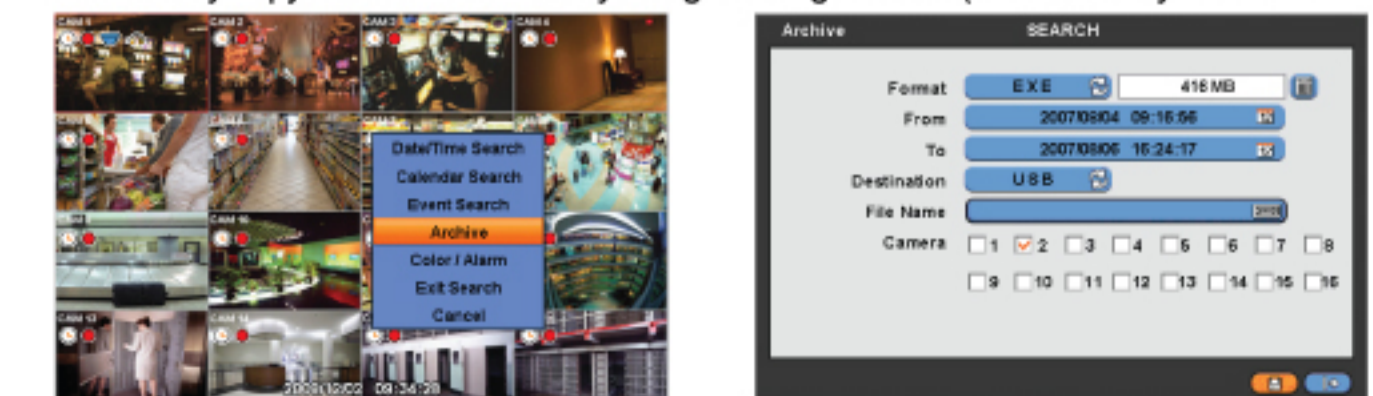


## Date / Time & Event Search

- Date / Time Search enables users to search and playback in a specific recorded time.
- Event Search enables users to search every event happened in a certain period of time.

## Archive

- Users may copy the recorded data by using a storage device (USB memory stick / DVD-RW).



- Archive
  - Connect a memory stick to USB slot of DVR.
  - Click "Format" frame to select EXE or JPEG. (EXE for videos, JPEG for still images)
  - Decide a period to archive on "From" and "To" item.
- Search Archive Setting
  - Enter a file name.
  - Choose camera(s) that users want to store.
  - Click the Calculator button and then start.